

STANDARD ARRIVAL
CHART - INSTRUMENT
(STAR) - ICAO

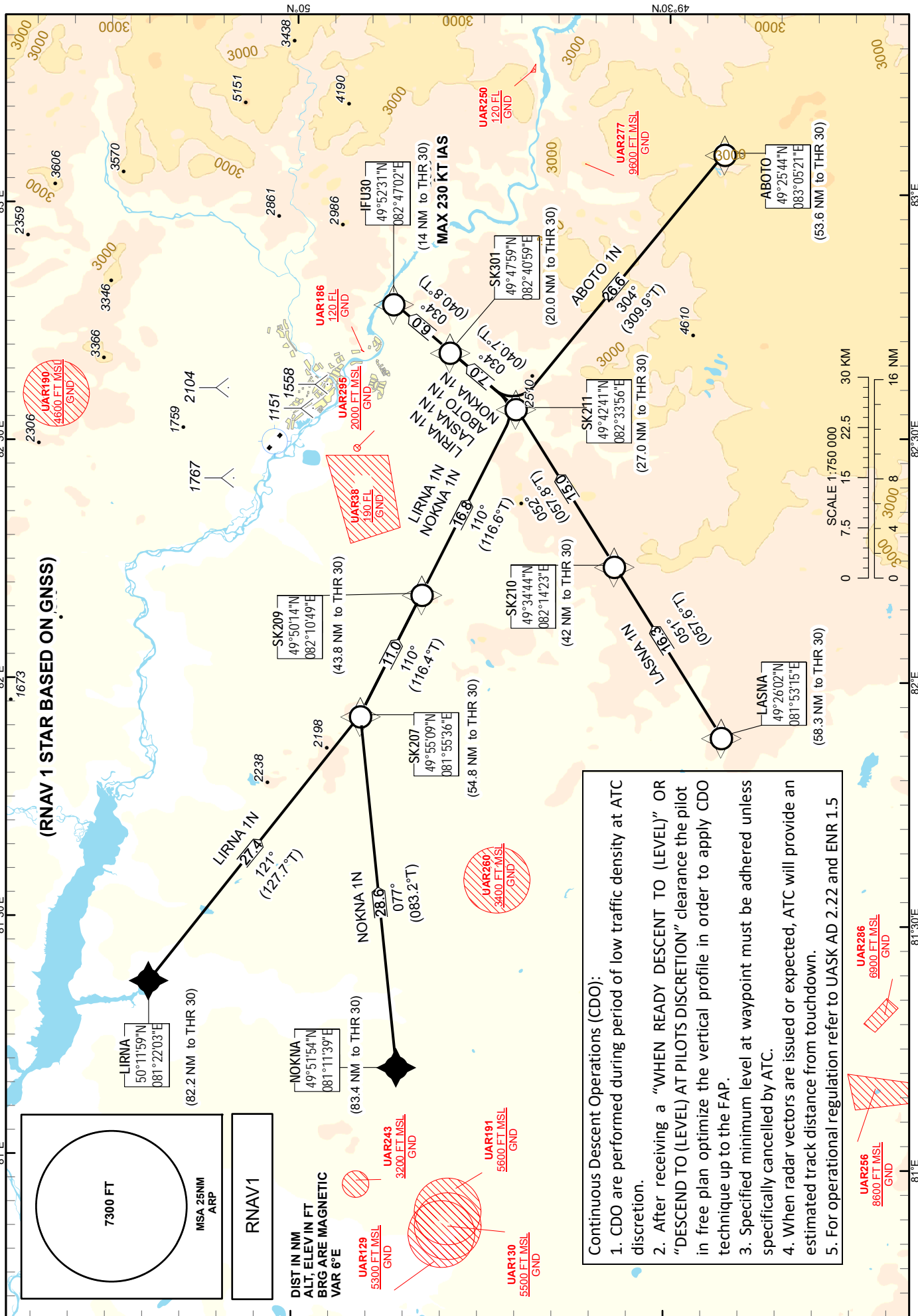
TRANSITION ALTITUDE
10000 FT

UST-KAMENOGORSK TOWER 130.1
UST-KAMENOGORSK ATIS (EN) 124.2
UST-KAMENOGORSK ATIS (RU) 127.7

ABOTO 1N, LASNA 1N,
LIRNA 1N, NOKNA 1N

UST-KAMENOGORSK
RWY 30

CHANGE: Add ATIS, editorial.



TABULAR DESCRIPTION

ABOTO 1N RWY30											
Serial Number	Path Descriptor	Waypoint Identifier	Fly - over	Course °M(°T)	Magnetic Variation(°)	Distance NM	Turn Direction	Altitude FT	Speed KT	VPA (°)	Navigation Specification
10	IF	ABOTO	-	-	+6.3	-	-	+120 FL/-200 FL	-280	-	RNAV 1
20	TF	SK211	-	304(309.9)	+6.3	26.6	L	+6700/-10000	-250	-1.9	RNAV 1
30	TF	SK301	-	034(40.7)	+6.3	7.0	R	+5600/-7900	-	-1.5	RNAV 1
40	TF	IFU30	-	034(40.8)	+6.3	6.0	-	+4600/-5800	-230	-1.6	RNAV 1

WAYPOINT LIST

ABOTO 1N		
Waypoint Identifier	Coordinates	
ABOTO	492544.00N	0830521.00E
SK211	494241.09N	0823356.37E
SK301	494759.16N	0824058.81E
IFU30	495231.44N	0824702.13E

TABULAR DESCRIPTION

LASNA 1N RWY30											
Serial Number	Path Descriptor	Waypoint Identifier	Fly - over	Course °M(°T)	Magnetic Variation(°)	Distance NM	Turn Direction	Altitude FT	Speed KT	VPA (°)	Navigation Specification
10	IF	LASNA	-	-	+6.3	-	-	+130 FL/-210 FL	-280	-	RNAV 1
20	TF	SK210	-	051(57.6)	+6.3	16.3	L	+9500/-160 FL	-250	-2	RNAV 1
30	TF	SK211	-	052(57.8)	+6.3	15.0	-	+6700/-10000	-	-1.8	RNAV 1
40	TF	SK301	-	034(40.7)	+6.3	7.0	L	+5600/-7900	-	-1.5	RNAV 1
50	TF	IFU30	-	034(40.8)	+6.3	6.0	-	+4600/-5800	-230	-1.6	RNAV 1

WAYPOINT LIST

LASNA 1N		
Waypoint Identifier	Coordinates	
LASNA	492602.00N	0815315.00E
SK210	493443.97N	0821422.65E
SK211	494241.09N	0823356.37E
SK301	494759.16N	0824058.81E
IFU30	495231.44N	0824702.13E

TABULAR DESCRIPTION

LIRNA 1N RWY30											
Serial Number	Path Descriptor	Waypoint Identifier	Fly - over	Course °M(°T)	Magnetic Variation(°)	Distance NM	Turn Direction	Altitude FT	Speed KT	VPA (°)	Navigation Specification
10	IF	LIRNA	-	-	+6.3	-	-	+180 FL/-300 FL	-280	-	RNAV 1
20	TF	SK207	-	121(127.7)	+6.3	27.4	R	+120 FL/-200 FL	-250	-2.1	RNAV 1
30	TF	SK209	-	110(116.4)	+6.3	11.0	L	+9900/-160 FL	-	-1.8	RNAV 1
40	TF	SK211	-	110(116.6)	+6.3	16.8	-	+6700/-10000	-	-1.8	RNAV 1
50	TF	SK301	-	034(40.7)	+6.3	7.0	L	+5600/-7900	-	-1.5	RNAV 1
60	TF	IFU30	-	034(40.8)	+6.3	6.0	-	+4600/-5800	-230	-1.6	RNAV 1

WAYPOINT LIST

LIRNA 1N		
Waypoint Identifier	Coordinates	
LIRNA	501159.00N	0812203.00E
SK207	495508.92N	0815535.81E
SK209	495014.45N	0821048.75E
SK211	494241.09N	0823356.37E
SK301	494759.16N	0824058.81E
IFU30	495231.44N	0824702.13E

TABULAR DESCRIPTION

NOKNA 1N RWY30											
Serial Number	Path Descriptor	Waypoint Identifier	Fly - over	Course °M(°T)	Magnetic Variation(°)	Distance NM	Turn Direction	Altitude FT	Speed KT	VPA (°)	Navigation Specification
10	IF	NOKNA	-	-	+6.3	-	-	+180 FL/-300 FL	-280	-	RNAV 1
20	TF	SK207	-	077(83.2)	+6.3	28.6	L	+120 FL/-200 FL	-250	-2	RNAV 1
30	TF	SK209	-	110(116.4)	+6.3	11.0	R	+9900/-160 FL	-	-1.8	RNAV 1
40	TF	SK211	-	110(116.6)	+6.3	16.8	-	+6700/-10000	-	-1.8	RNAV 1
50	TF	SK301	-	034(40.7)	+6.3	7.0	L	+5600/-7900	-	-1.5	RNAV 1
60	TF	IFU30	-	034(40.8)	+6.3	6.0	-	+4600/-5800	-230	-1.6	RNAV 1

WAYPOINT LIST

NOKNA 1N		
Waypoint Identifier	Coordinates	
NOKNA	495154.00N	0811139.00E
SK207	495508.92N	0815535.81E
SK209	495014.45N	0821048.75E
SK211	494241.09N	0823356.37E
SK301	494759.16N	0824058.81E
IFU30	495231.44N	0824702.13E